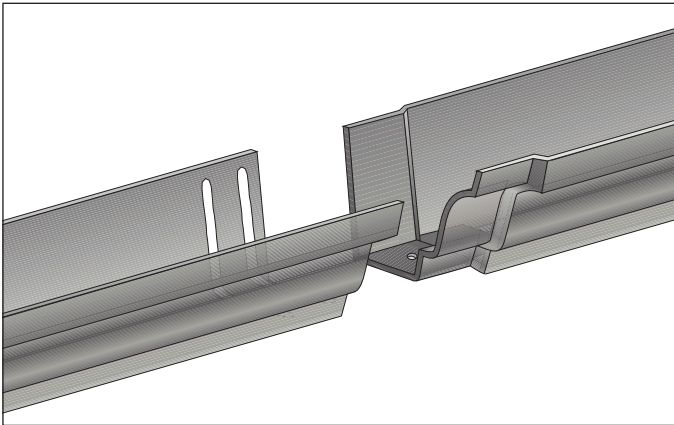


# CAST IRON INSTALLATION INSTRUCTIONS

## CAST IRON GUTTERS

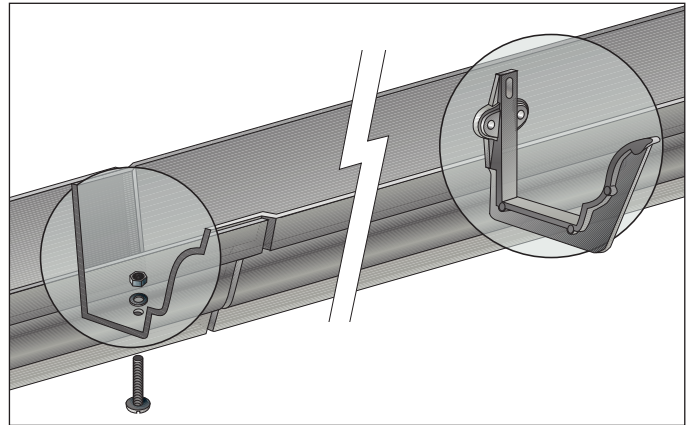
1. Fix gutter brackets at 600mm centres to give correct line and level. Use appropriate length stainless steel screw.
2. Place gutter in position and ensure correct sit into brackets.
3. Ensure all joint areas are clean, dry, dust and grease free prior to applying silicone sealant.
4. Apply 2 no. 6mm beads of low modulus silicone to joint and around bolt hole.
5. Insert 25 x 5mm stainless fixing bolts from the underside of the gutter. Do not over tighten.
6. Remove any surplus sealant from faces of gutter.



7. Gutter may be cut using a tungsten tipped hacksaw or powered disc cutter.
8. Ensure any cut ends are painted.

## PAINTING SPECIFICATION

1. Products supplied in a grey transit coat only.
2. All pipes, gutters and accessories should be inspected for any sign of rust and cleaned using a wire brush.
3. A primer coat should then be applied, followed by two coats of undercoat and one coat of gloss.
4. For coastal areas, please consult your paint stockist for appropriate specification.



## CAST IRON PIPES

1. Place rainwater pipe in correct position and mark wall through pre-drilled holes in ears of pipe.
2. Drill wall using appropriate masonry bit.
3. Fix through pre-drilled pipe ears using large head pipe nails, Rawl bolts or Coach screws.
4. Ensure pipes are plumb and offer up next pipe or component.
5. Fit in to sockets centralising by using 3 no. lead wedges.
6. Joints between sections can be pointed with silicone if required.
7. Bobbins are available to ensure a straight line to rainwater pipes where the building surface may be uneven.
8. Pipes may be cut to length using a powered disc cutter, tungsten tipped hacksaw or pipe wheel cutter. Ensure any burr is removed with a file.
9. Ensure all cut edges are painted.

## PAINTING SPECIFICATION

1. Products supplied in a grey transit coat only.
2. All pipes, gutters and accessories should be inspected for any sign of rust and cleaned using a wire brush.
3. A primer coat should then be applied, followed by two coats of undercoat and one coat of gloss.
4. For coastal areas, please consult your paint stockist for appropriate specification.

